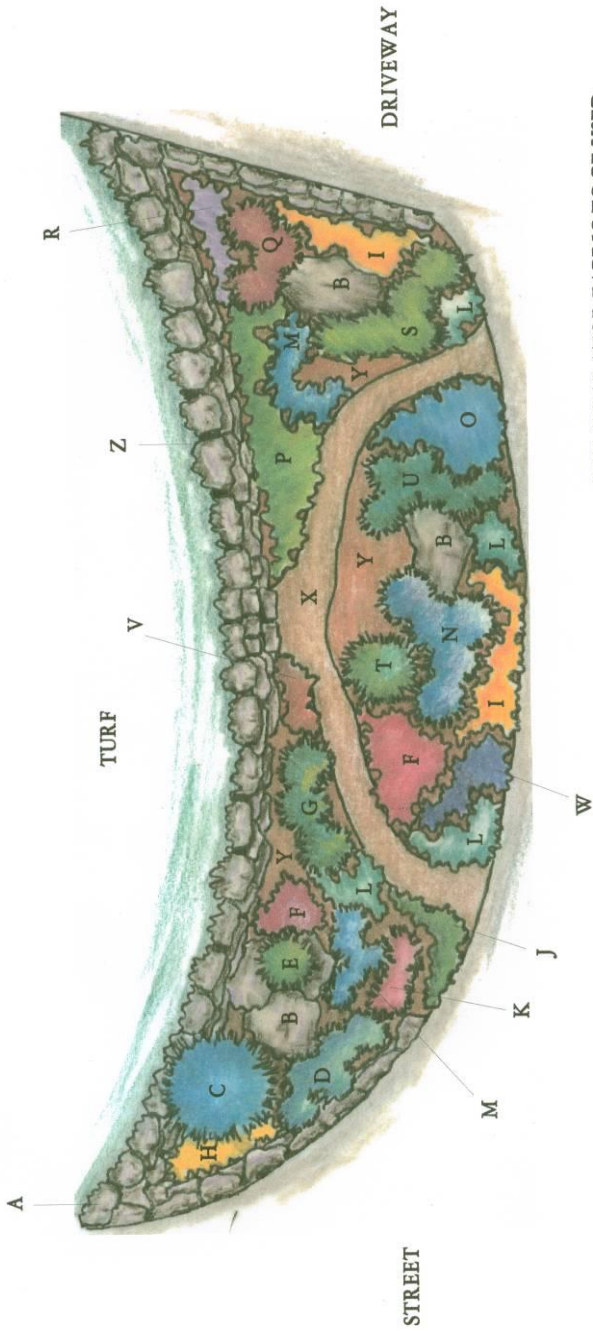


- |                                |                                    |                                |
|--------------------------------|------------------------------------|--------------------------------|
| A - 4 TONS LIMESTONE FLATS     | J - 16 TRIFOLIUM DRAGON'S BLOOD    | S - 5 DWARF SPIREA             |
| B - 5 LARGE BOULDERS           | K - 16 MONARDA PETITE DELIGHT      | T - 1 POM-POM DWARF PINE       |
| C - 1 WEeping-BLUE ATLAS CEDAR | L - 32 FRAGARIA VARIEGATA          | U - 7 DWARF ITEA               |
| D - 5 BLUE PACIFIC JUNIPER     | M - 32 SCABIOSA BUTTERFLY BLUE     | V - 16 LYCHNIS VISCARIA        |
| E - 1 DWARF HINOKI             | N - 5 BLUE RUG JUNIPER             | W - 16 ERIGERON C. SEBASTIAN   |
| F - 32 AUTUMN JOY SEDUM        | O - 32 WALKER'S LOW NEPETA         | X - 20 CYPRESS MULCH FOR PATH  |
| G - 3 DWARF MUGHO PINE         | P - 64 JUNCUS SPIRALIS             | Y - 16 TONS OF RIVER ROCK      |
| H - 16 GOLDEN YARROW           | Q - 3 RED PEONIES                  | Z - 64 CREEPING PHLOX FOR WALL |
| I - 32 DWARF COREOPSIS         | R - 16 PENSTEMON PIKES PEAK PURPLE |                                |



SOIL SEPARATOR FABRIC TO BE USED THROUGHOUT ALL BED, PATH AREAS AND BEHIND DRY STACKED WALL. USE PINE COMPOST AS A SOIL CONDITIONER.

ROCK/ALPINE GARDEN STUDY FOR:  
 BOB & LORI RICHARDSON  
 BROKEN ARROW, OKLAHOMA